



# SWINGING GATES

Electromechanical automation  
systems for swinging gates



**BFT**

Be ahead



## PHOBOS AC A

Electromechanical automation for swing gates

### Description

Complete range of electromechanical pistons for residential use, suitable for swing gate leaves up to 5 metres wide and weighing up to 500 kg.



### Technical features

Description	Phobos AC A25	Phobos AC A50
Code	P935098 00002	P935097 00002
Power supply	230 V	230 V
Gate leaf length	2.5 m	5 m
Max Leaf	400 kg	500 kg
Control unit	ALENA ACL2	ALENA ACL2
Cycle time	14 sec	18 sec
Impact reaction	electric clutch	electric clutch
Frequency of use	semi-intensive	semi-intensive



## PHOBOS BT A

Electromechanical automation for swing gates

### Description

Complete range of electromechanical pistons for residential use, suitable for swing gate leaves up to 4 metres wide and weighing up to 500 kg.



### Technical features

Description	Phobos BT A25	Phobos BT A40
Code	P935096 00002	P935095 00002
Power supply	24 V	24 V
Gate leaf length	2.5 m	4 m
Max Leaf	400 kg	500 kg
Control unit	ZARA BT L2	ZARA BT L2
Cycle time	15 sec	20 sec
Impact reaction	d-track	d-track
Frequency of use	intensive	intensive



## KUSTOS BT A

Electromechanical automation for swing gates

### Description

Complete range of electromechanical pistons for residential use, suitable for swing gate leaves up to 4 metres wide and weighing up to 500 kg.



### Technical features

Description	KUSTOS BT A25	KUSTOS BT A40
Code	P935099 00002	P935100 00002
Power supply	24 V	24 V
Gate leaf length	2.5 m	4 m
Max Leaf	400 kg	500 kg
Control unit	ZARA BTL2	ZARA BTL2
Cycle time	13 sec	17 sec
Impact reaction	d-track	d-track
Frequency of use	intensive	intensive



## KUSTOS ULTRA BT A

Electromechanical automation for swing gates

### Description

Complete range of electromechanical pistons for residential use, suitable for swing gate leaves up to 4 metres wide and weighing up to 500 kg.



### Technical features

Description	KUSTOS ULTRA BT A25	KUSTOS ULTRA BT A40
Code	P935101 00002	P935102 00002
Power supply	24 V	24 V
Gate leaf length	2.5 m	4 m
Max Leaf	400 kg	500 kg
Control unit	THALIA	THALIA
Cycle time	13 sec	17 sec
Impact reaction	d-track	d-track
Frequency of use	intensive	intensive



## VIRGO

Electromechanical automation for swing gates

### Description

Electromechanical operator with articulated arm for residential use, for swing gate leaves of up to 2 metres and 200 kg. Ideal for all installation situations, with a lever system for the simple resolution of problems linked to large-size pillars. Control unit, limit switches and mechanical stops incorporated in operator.



### Technical features

Description	VIRGO	VIRGO SQ
Code	P930116 00002	P930117 00002
Control unit	LINX	
Max Leaf	200 kg	200 kg
Gate leaf length	2 m	2 m
Power supply	24 V	24 V
Cycle time	14 sec	14 sec
Impact reaction	electronic torque limiter	electronic torque limiter
Frequency of use	semi-intensive	semi-intensive



## IGEA BT

Electromechanical automation for swing gates

### Description

Complete range of irreversible electromechanical operators 24 V for swing gates up to 250 kg of weight and 2.5 m length.



### Technical features

Description	IGEA BT
Code	P935070 00002
Power supply	24 V
Gate leaf length	2.5 m
Max Leaf	250 kg
Control unit	THALIA
Cycle time	15 sec
Impact reaction	d-track
Frequency of use	intensive



## IGEA

Electromechanical automation for swing gates

### Description

Range of electromechanical operators with articulated arm for residential use, for swing gate leaves of up to 2.5 metres and 250 kg. Ideal for installation on large-size pillars thanks to its articulated levers that allow opening up to 125°.



### Technical features

Description	IGEA
Code	P935065 00002
Power supply	230 V
Gate leaf length	2.5 m
Max Leaf	250 kg
Control unit	ALTAIR P
Cycle time	15 sec
Impact reaction	electric clutch
Frequency of use	intensive

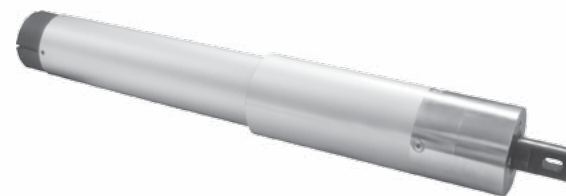


## HIDE SW

Electromechanical automation for swing gates

### Description

Residential 24V operator for gates of up to 150 kg in weight, able to integrate completely within the jambs of swing gates. Disappearing completely, it enables keeping the look of the gates "clean" while remaining a fundamental element of operational performance. The Hide range includes an entire outfit of accessories needed to install the gate completely, such as the top and bottom hinges.



### Technical features

Description	HIDE SW
Code	P930124 00001
Power supply	24 V
Gate leaf length	2 m
Max Leaf	150 kg
Control unit	CB HIDE
Cycle time	12 sec
Impact reaction	d-track
Frequency of use	intensive



## E5 N

Electromechanical automation for swing gates

### Description

Extremely small-size electromechanical operator with articulated arm. Suitable for residential use; capable of automating swing gate leaves up to 1.8 metres wide and weighing up to 200 kg.



### Technical features

Description	<b>E5</b>
Code	P930003 00001
Power supply	230 V
Gate leaf length	1.8 m
Max Leaf	200 kg
Control unit	ALCOR N
Cycle time	22 sec
Impact reaction	mechanical clutch
Frequency of use	semi-intensive



## ELI 250 N BT

Electromechanical automation for swing gates

### Description

Complete range of locking underground electromechanical operators for swing gates up to 400 kg and 3.5 m long.



### Technical features

Description	<b>ELI 250 N BT</b>
Code	P930125 00001
Power supply	24 V
Gate leaf length	3.5 m
Max Leaf	400 kg
Control unit	THALIA
Cycle time	15 sec
Impact reaction	d-track
Frequency of use	intensive



## ELI 250 N

Electromechanical automation for swing gates

### Description

Range of underground electromechanical operators for residential use, for swing gate leaves of up to 3.5 metres and 300 kg.

The built-in mechanical stops for both opening and closing enable making the installation totally invisible thanks to having eliminated the stops on the ground.



### Technical features

Description	ELI 250 N V	ELI 250 N
Code	P930126 00002	P930125 00002
Power supply	230 V	230 V
Gate leaf length	2 m	3.5 m
Max Leaf	150 kg	300 kg
Control unit	ALTAIR P	ALTAIR P
Cycle time	14 sec	28 sec
Impact reaction	electric clutch	electric clutch



## PHOBOS AC KIT A25 FRA

Complete kit 230 V for sliding gates up to 400 kg in weight and 2.5 m in length.



### R935304 00003

#### The KIT includes

- 2 - Phobos AC A25 locking electromechanical operator 230 V for swing gates weighing up to 400 kg and 2.5 m long.
- 2 - Mitto B Rcb04 R1 Transmitter with 4 channels. Range 50/100 m. Power supply 12 V with 1 battery type 23 A
- 1 - ALENA ACL2 ALTAIR P control panel
- 1 - DESME A15 Pair of self-aligning photocells. Range 30 m. Power supply 24 V ac/dc.
- 1 - RADIUS B LTA 230 R1 Flashing light with incorporated antenna for motors with power supply 230 V.



## PHOBOS AC KIT A50 FRA

Complete kit 230 V for sliding gates up to 500 kg in weight and 5 m in length.



### R935305 00003

#### The KIT includes

- 2 - Phobos AC A50 locking electromechanical operator 230 V for swing gates weighing up to 500 kg and 5 m long.
- 2 - Mitto B Rcb04 R1 Transmitter with 4 channels. Range 50/100 m. Power supply 12 V with 1 battery type 23 A
- 1 - ALENA ACL2 ALTAIR P control panel
- 1 - DESME A15 Pair of self-aligning photocells. Range 30 m. Power supply 24 V ac/dc.
- 1 - RADIUS B LTA 230 R1 Flashing light with incorporated antenna for motors with power supply 230 V.



## PHOBOS BT KIT A40 FRA

Complete kit 24 V for sliding gates up to 500 kg in weight and 4 m in length.



ee link



rolling code



24 V



er ready



d-track

### R935309 00005

#### The KIT includes

- 2 - Phobos BT A40 locking electromechanical operator 24 V for swing gates weighing up to 500 kg and 4 m long.
- 2 - Mitto B Rcb04 R1 Transmitter with 4 channels. Range 50/100 m. Power supply 12 V with 1 battery type 23 A
- 1 - ZARA BT L2 Control panel for one or two 24V operators for swing gates
- 1 - DESME A15 Pair of self-aligning photocells. Range 30 m. Power supply 24 V ac/dc.
- 1 - RADIUS B LTA 24 R1 Flashing light without incorporated antenna for motors with power supply 24 V.



## KUSTOS BT KIT A40 FRA

Complete kit 24 V for sliding gates up to 500 kg in weight and 4 m in length.



ee link



rolling code



24 V



er ready



d-track

### R935310 00005

#### The KIT includes

- 2 - KUSTOS BT A40 locking electromechanical operator 24 V for swing gates weighing up to 500 kg and 4 m long.
- 2 - Mitto B Rcb04 R1 Transmitter with 4 channels. Range 50/100 m. Power supply 12 V with 1 battery type 23 A
- 1 - THALIA Control panel for one or two 24V operators for swing gates
- 1 - DESME A15 Pair of self-aligning photocells. Range 30 m. Power supply 24 V ac/dc.
- 1 - RADIUS B LTA 24 R1 Flashing light without incorporated antenna for motors with power supply 24 V.



## PHOBOS BT KIT A25 FRA

Complete kit 24 V for sliding gates up to 400 kg in weight and 2.5 m in length.



ee link



rolling code



24 V



er ready



d-track

### R935306 00005

#### The KIT includes

- 2 - Phobos BT A25 locking electromechanical operator 24 V for swing gates weighing up to 400 kg and 2.5 m long.
- 2 - Mitto B Rcb04 R1 Transmitter with 4 channels. Range 50/100 m. Power supply 12 V with 1 battery type 23 A
- 1 - ZARA BT L2 Control panel for one or two 24V operators for swing gates
- 1 - DESME A15 Pair of self-aligning photocells. Range 30 m. Power supply 24 V ac/dc.
- 1 - RADIUS B LTA 24 R1 Flashing light without incorporated antenna for motors with power supply 24 V.



## KUSTOS KIT A25 FRA

Complete kit 24 V for sliding gates up to 400 kg in weight and 2.5 m in length.



ee link



rolling code



24 V



er ready



d-track

### R935307 00005

#### The KIT includes

- 2 - KUSTOS BT A25 locking electromechanical operator 24 V for swing gates weighing up to 400 kg and 2.5 m long.
- 2 - Mitto B Rcb04 R1 Transmitter with 4 channels. Range 50/100 m. Power supply 12 V with 1 battery type 23 A
- 1 - THALIA Control panel for one or two 24V operators for swing gates
- 1 - DESME A15 Pair of self-aligning photocells. Range 30 m. Power supply 24 V ac/dc.
- 1 - RADIUS B LTA 24 R1 Flashing light without incorporated antenna for motors with power supply 24 V.



## KUSTOS ULTRA KIT A25 FRA

Complete kit 24 V for swing gates weighing up to 400 kg and 2.5 m long. Operators with covered worm screw (ip44).



### R935308 00005

#### The KIT includes

- 2 - KUSTOS ULTRA BT A25 locking electromechanical operator 24 V for swing gates weighing up to 400 kg and 2.5 m long with covered worm screw.
- 2 - Mitto B Rcb04 R1 Transmitter with 4 channels. Range 50/100 m. Power supply 12 V with 1 battery type 23 A
- 1 - THALIA Control panel for one or two 24V operators for swing gates
- 1 - DESME A15 Pair of self-aligning photocells. Range 30 m. Power supply 24 V ac/dc.
- 1 - RADIUS B LTA 24 R1 Flashing light without incorporated antenna for motors with power supply 24 V.



## KUSTOS ULTRA BT KIT A40 FRA

Complete kit 24 V for swing gates weighing up to 500 kg and 4 m long. Operators with covered worm screw (ip44).



### R935311 00005

#### The KIT includes

- 2 - KUSTOS ULTRA BT A40 locking electromechanical operator 24 V for swing gates weighing up to 500 kg and 4 m long with covered worm screw.
- 2 - Mitto B Rcb04 R1 Transmitter with 4 channels. Range 50/100 m. Power supply 12 V with 1 battery type 23 A
- 1 - THALIA Control panel for one or two 24V operators for swing gates
- 1 - DESME A15 Pair of self-aligning photocells. Range 30 m. Power supply 24 V ac/dc.
- 1 - RADIUS B LTA 24 R1 Flashing light without incorporated antenna for motors with power supply 24 V.



## KIT VIRGO FRA

Complete kit 24 V for sliding gates up to 200 kg in weight and 2 m in length.



### R930130 00001

#### The KIT includes

- 1 - VIRGO locking electromechanical operator 24 V for swing gates weighing up to 200 kg and 2 m long.
- 1 - VIRGO SQ Electromechanical operator 24 V for swing gates up to 200 kg in weight and 2 m in length.
- 2 - Mitto B Rcb04 R1 Transmitter with 4 channels. Range 50/100 m. Power supply 12 V with 1 battery type 23 A
- 1 - DESME A15 Pair of self-aligning photocells. Range 30 m. Power supply 24 V ac/dc.
- 1 - RADIUS B LTA 24 R1 Flashing light without incorporated antenna for motors with power supply 24 V.



## KIT VIRGO ITA

Complete kit 24 V for sliding gates up to 200 kg in weight and 2 m in length.



### R930130 00002

#### The KIT includes

- 1 - VIRGO locking electromechanical operator 24 V for swing gates weighing up to 200 kg and 2 m long.
- 1 - VIRGO SQ Electromechanical operator 24 V for swing gates up to 200 kg in weight and 2 m in length.
- 1 - Mitto B Rcb04 R1 Transmitter with 4 channels. Range 50/100 m. Power supply 12 V with 1 battery type 23 A
- 1 - DESME A15 Pair of self-aligning photocells. Range 30 m. Power supply 24 V ac/dc.
- 1 - Q.B0 KEY WM Key selector for outdoor use with double contact.
- 1 - RADIUS B LTA 24 R1 Flashing light without incorporated antenna for motors with power supply 24 V.



## KIT IGEA BT FRA

Electromechanical operator 24 V for swing gates up to 250 kg in weight and 2.5 m in length.



**R935229 00002**

*The KIT includes*

- 1- IGEA BT locking electromechanical operator 24 V for swing gates weighing up to 250 kg and 2.5 m long.
- 2- Mitto B Rcb04 R1 Transmitter with 4 channels. Range 50/100 m. Power supply 12 V with 1 battery type 23 A
- 1- THALIA Control panel for one or two 24V operators for swing gates
- 1- DESME A15 Pair of self-aligning photocells. Range 30 m. Power supply 24 V ac/dc.
- 1- RADIUS B LTA 24 R1 Flashing light without incorporated antenna for motors with power supply 24 V.



## KIT IGEA FRA

Complete kit 230 V for sliding gates up to 250 kg in weight and 2.5 m in length.



**R935221 00002**

*The KIT includes*

- 2- IGEA Electromechanical operator 230 V for sliding gates up to 250 kg in weight and 2.5 m in length.
- 2- Mitto B Rcb04 R1 Transmitter with 4 channels. Range 50/100 m. Power supply 12 V with 1 battery type 23 A
- 1- ALTAIR P ALTAIR P control panel
- 1- DESME A15 Pair of self-aligning photocells. Range 30 m. Power supply 24 V ac/dc.
- 1- RADIUS B LTA 230 R1 Flashing light with incorporated antenna for motors with power supply 230 V.



## KIT IGEA BT FRA THALIA

Electromechanical operator 24 V for swing gates up to 250 kg in weight and 2.5 m in length.



**R935297 00002**

*The KIT includes*

- 2- IGEA BT locking electromechanical operator 24 V for swing gates weighing up to 250 kg and 2.5 m long.
- 2- Mitto B Rcb04 R1 Transmitter with 4 channels. Range 50/100 m. Power supply 12 V with 1 battery type 23 A
- 1- THALIA Control panel for one or two 24V operators for swing gates
- 1- DESME A15 Pair of self-aligning photocells. Range 30 m. Power supply 24 V ac/dc.
- 1- RADIUS B LTA 24 R1 Flashing light without incorporated antenna for motors with power supply 24 V.



## KIT HIDE SW

Complete kit 24 V for sliding gates up to 150 kg in weight and 2 m in length.



**R930138 00002**

*The KIT includes*

- 2- HIDE SW Disappearing locking electromechanical operator 24 V for swing gates weighing up to 150 kg and 2 m long.
- 2- Mitto B Rcb04 R1 Transmitter with 4 channels. Range 50/100 m. Power supply 12 V with 1 battery type 23 A
- 1- LIBRA CB HIDE Control panel for one or two HIDE SW series operators
- 1- DESME A15 Pair of self-aligning photocells. Range 30 m. Power supply 24 V ac/dc.
- 1- RADIUS B LTA 24 R1 Flashing light without incorporated antenna for motors with power supply 24 V.



**RADIUS B LTA 230 R1****D113748 00002**

Flashing light with incorporated antenna for motors with power supply 230 V.

**RADIUS B LTA 24 R1****D113748 00003**

Flashing light without incorporated antenna for motors with power supply 24 V.

**IPNOS B LTB 24 R1****D113783**

Flashing beacon with LED technology. New design language with smoke-grey cover. Built-in antenna. Power supply 24 V.

**THEA A15 O.PF****P111528**

Pair of positionable photocells with integrated flashing beacon Beam can be positioned 40° horizontally and 10° vertically. Synchronised infrared signal to avoid any possibility of accidental dazzling. Range 30 m. Power supply 24 V ac/dc. For external application.

**THEA A15 O.PF UNI****P111714**

Pair of positionable photocells with integrated flashing beacon Beam can be positioned 40° horizontally and 10° vertically. Synchronised infrared signal to avoid any possibility of accidental dazzling. Range 30 m. Power supply 24 V ac/dc. For external application.

**DESME A15 O****P111527**

Pair of self-aligning photocells. Range 30 m. Power supply 24 V ac/dc.

**DESME A15****P111526**

Pair of self-aligning photocells. Range 30 m. Power supply 24 V ac/dc.

**MITTO B RCB02 R1****D111904**

Transmitter with 2 channels. Range 50/100 m. Power supply 12 V with 1 battery type 23 A

**MITTO B RCB04 R1****D111906**

Transmitter with 4 channels. Range 50/100 m. Power supply 12 V with 1 battery type 23 A

**MITTO B RCB02 R2 REPLAY****D111905**

Clonable transmitter 2 channels. Range 50/100 m. Power supply 12 V with 1 battery type 23 A

**MITTO B RCB04 R2 REPLAY****D111907**

Clonable transmitter 4 channels. Range 50/100 m. Power supply 12 V with 1 battery type 23 A



## CLONIX 2E AC U-LINK 230

D113807 00002

433Mhz external receiver with 2 outputs with NO contact. Compatible with U-LINK protocol (with 3 connection slots). Power supply 230V, 2048-position memory

## CLONIX UNI AC U-LINK 230V

D113808 00003

433Mhz external receiver with 3 outputs: 2 with NO contact and one NO/NC configurable. Compatible with U-LINK protocol (with 3 connection slots). Power supply 230V, 2048-position memory



## B EBA BLUE ENTRY ANDROID 4

P111531

BLUE-TOOTH expansion card for Blue Entry system. Manages up to 4 smartphones with the Android operating system

## B EBA BLUE ENTRY ANDROID 8

P111532

BLUE-TOOTH expansion card for Blue Entry system. Manages up to 8 smartphones with the Android operating system



## B EBA BLUE ENTRY ANDROID 16

P111533

BLUE-TOOTH expansion card for Blue Entry system. Manages up to 16 smartphones with the Android operating system

The contents of this catalogue (images, technical descriptions, illustrations) are the exclusive property of Bft s.p.a. Reproduction in any form and on any medium is forbidden. Copyright 2015. All rights reserved. The information given in this publication is only a guide. Bft reserves the right to make any changes without prior notice.

0832963 00201



**Bft Spa**

Via Lago di Vico, 44 - 36015 Schio (VI) ITALY

T. +39 0445 696511 - F. +39 0445 69 65 22 - [info@bft.it](mailto:info@bft.it)

[www.bft-automation.com](http://www.bft-automation.com)



Be ahead